



DAF EQUIPMENT FEATURES

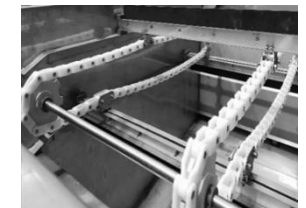
AERATION SYSTEM		
MANIFOLD		
TANK MATERIAL	SS 304	
DIAMETER	154	mm
LENGTH	1400	mm
DISTRIBUTION VALVES	MANUAL	
Nº DISTRIBUTION PUMP	8	ud



RECIRCULATION PUMP		
TYPE	CENTRIFUGA HORIZONTAL	
QUANTITY	1+1	uds
MATERIAL		
BODY	SS 304	
IMPULSOR	SS 304	
CHARACTERISTICS		
FLOW	5	m ³ /h
PRESSURE	60	m.c.a
MOTOR		
POWER	7,5	Kw
V/F/F	380-400/III/50	V/F/Hz
CLASS	F-IE3	
PROTECTION	IP-55	
SPEED	15 rpm	
LT FOR THE PUMP PROTECTION		
ACCESORIES	MANUAL VALVES ON SUCTION AND DISCHARGE	





SKIMMER SET		
Material		
SCRAPERS	NEOPRENE	
CHAIN	POM	
SPROCKETS	POM	
SIKKMER MOTOR		
QUANTITY	1	uds
POWER	0,37	kw
V/F/F	380-400/III/50	V/F/Hz
CLASS	F-IE3	
PROTECTION	IP-55	
MATERIAL	SS 304	
SPEED	15	rpm



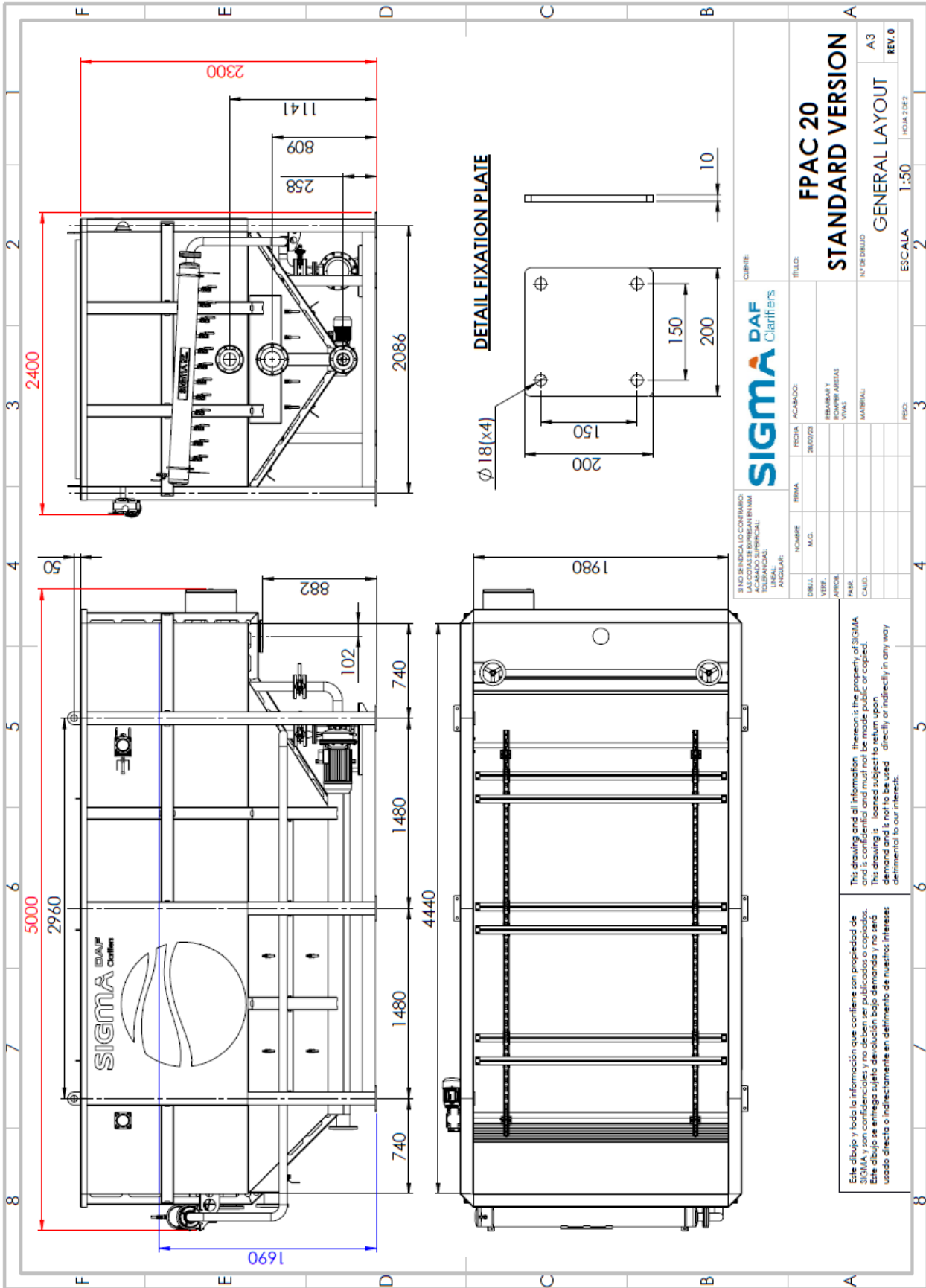


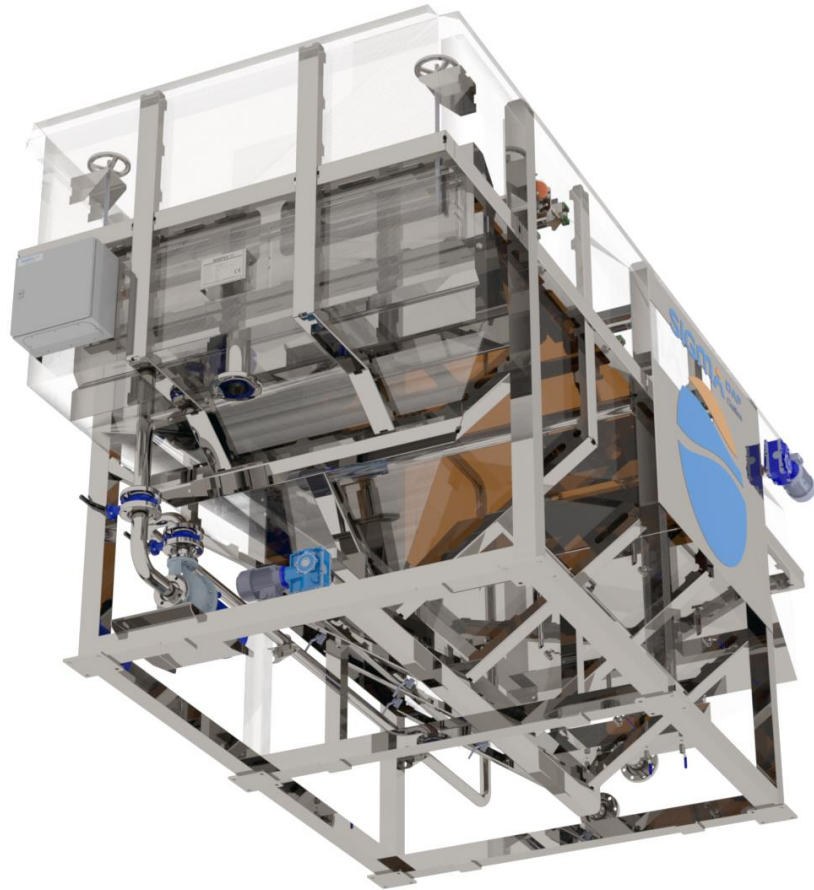
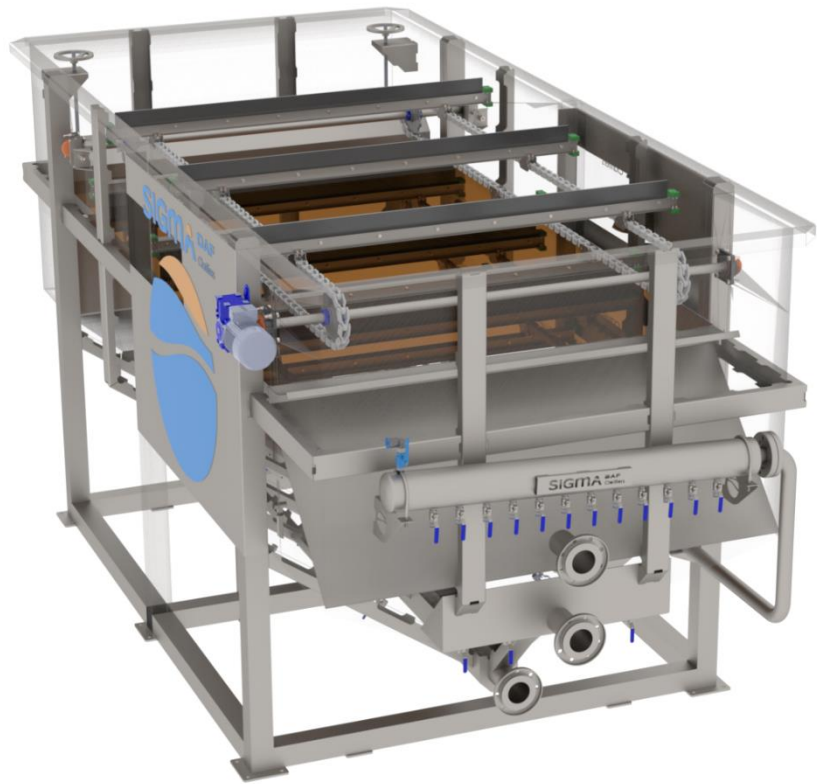
SET SCREW		
TYPE	SHAFTLESS SCREW CONVEYOR	
MATERIAL	SS 304	
ACTUATOR	TYRE	
PNEUMATIC PURGE VALVE	1/UD	
MOTOR		
PROTECTION	IP-55	
POWER	0,37	Kw
V/F/F	380-400/III/50	V/Hz



PNEUMATIC CONTROL PANEL		
CLOSED POLYESTER PANEL		
ELECTRONIC PRESSURE SWITCH FOR AERATION SAFETY	0-4 bar 1/2" + man	
GLYCERINE TYPE RECIRCULATION PRESSURE GAUGE	63-0-12bar- output:pos 1/4"	
PRESSURE REGULATING FILTER	1/2" 40micras+man	
AIR FLOW METER		
SOLENOID VALVE FOR AERATION		
FITTINGS AND SHUT-OFF VALVES.		
PROTECTION	IP-65	









OPTIONALS

COVERS



Stop-cord System alarm

